

scapp-rcon builder

Description / Purpose

This tool allows adding/editing of rcon commands that can be used in scapp-host.

System Requirements:

scapp-host needs the .NET Framework 2.0 or higher to run.

Licence:

no licence

Download:

[Downloads](#)

Installation:

Execute the rcb-setup.msi file, this will start the installer which will guide you through the installation process.

Beta Version:

This is a beta version, it will include bugs and errors, please don't use it if you are not sure about it. Please report any feedback or errors at www.scapp.net/forum or in the www.x-null.net forum. thanks very much.

Version History

1.0.0.2:

Initial public version

Documentation

Installation

Execute the scapp-rcon-builder-setup.msi file to run the setup. The setup will install scapp-rcon-builder to your application folder.

scapp-rcon command builder

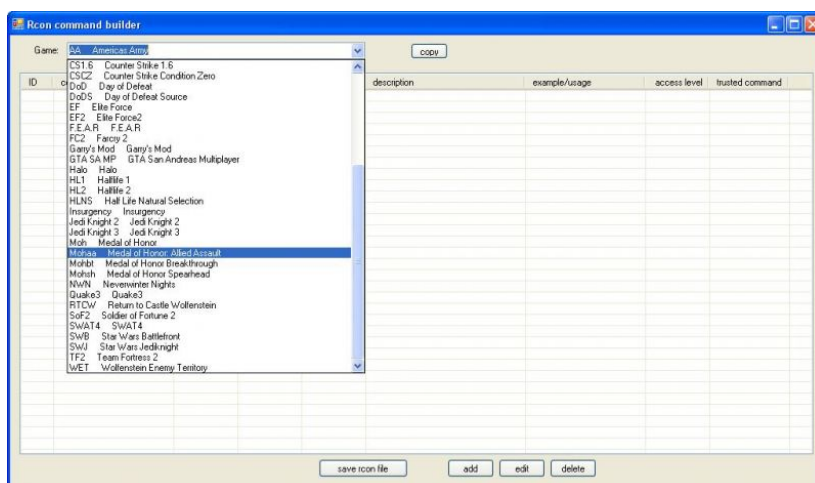


image: main window

Select a game to get the list of rcon commands for that game

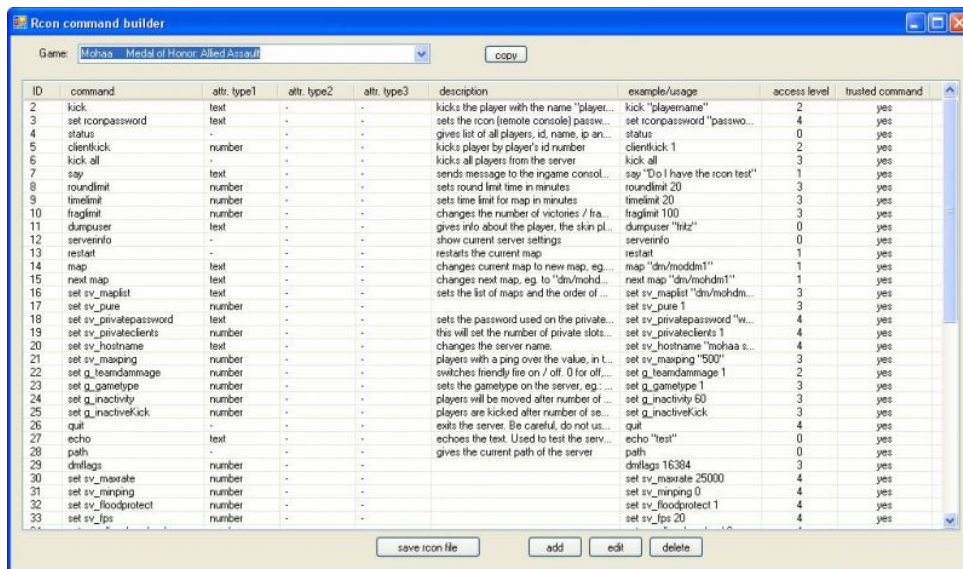


image: main window 2

save rcon file: click this button to take over any changes / additions to the rcon commands list file.

The commands are stored in the "scr.dat" file in the dat folder: programs==>scapp==>rcb==>dat
To use these commands in scapp-host copy the scr.dat file to the dat folder of scapp-host:
programs==>scapp==>scapp-host==>dat

copy: Click this button to take over all rcon commands from one game to another game. (A new window will open to select the games)

Adding / Editing rcon commands for a selected game

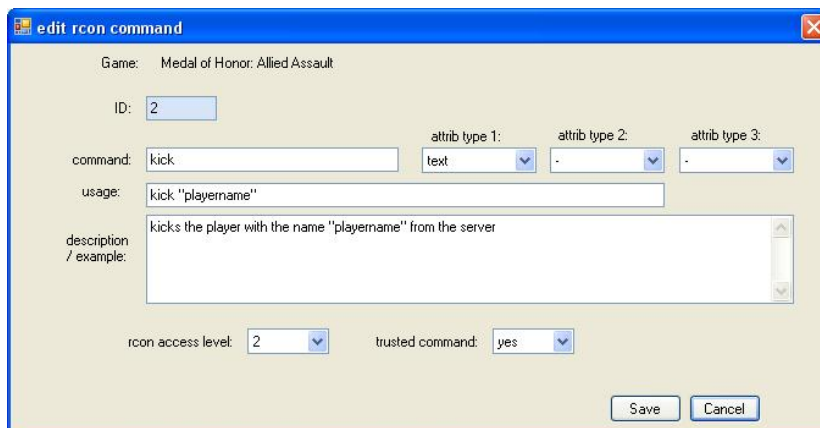


image: add / edit rcon command window

command: The rcon command

attrib types: Defines if the rcon command is used with attributes and of which type the attributes are. For example the command: *kick testplayer* has one attribute (testplayer) which is of type text. Defining attributes is used for syntax checking inside scapp-host.

usage: An example how the rcon command is used.

description / example: Description of the rcon command.

rcon access level: In scapp-host you can assign admins / users a permission level. Lowest level is 0, highest is 5. Here you define which permission level is needed to execute the rcon command.

trusted command: Not used in this versioin of rcon builder